

# 2018 WSU ADVISORY COUNCIL TOUR & SUMMIT

Washington State University Everett | June 5-6, 2018

## ITINERARY

### TUESDAY, JUNE 5

- 11:30AM **Box Lunch at WSU Everett**  
*WSU Everett, First Floor Lobby & Room #101, 915 North Broadway, Everett, WA 98201*
- 12:00PM Group A meets in South Entrance Lobby - Carpool to Research & Extension Center  
Group B meets in Room #101 – Carpool to Bread Lab
- 1:00PM **CONCURRENT TOURS: WSU Mt. Vernon Research & Extension Center & Bread Lab**
- Group A: Research & Extension Center** | 16650 WA-536, Mt. Vernon, WA 98273
- Chad Kruger, Director, NW Washington Research & Extension Center
- Group B: Bread Lab** | 11768 Westar Ln, Burlington, WA 98233
- Kim Binczewski, Managing Director, Bread Lab
  - Steve Lyon, Senior Scientific Assistant
- 2:00PM First tour concludes, groups travel to alternate facility
- 2:30PM **CONCURRENT TOURS: WSU Mt. Vernon Research & Extension Center & Bread Lab**
- Group A: Bread Lab** | 11768 Westar Ln, Burlington, WA 98233
- Group B: Research & Extension Center** | 16650 WA-536, Mt. Vernon, WA 98273
- 3:30PM Carpool back to WSU Everett campus to pick-up vehicles or proceed to hotel for check-in
- 5:45PM Meet in Courtyard Marriott hotel lobby for carpool to reception and dinner
- 6:00PM **Reception & Dinner at Bluewater Organic Distillery: Bar & Bistro**  
*1205 Craftsman Way, Suite 109, Everett, WA 98201*
- 8:00PM **Overnight at Courtyard by Marriott in Everett**

### WEDNESDAY, JUNE 6

- 8:00AM **Continental Breakfast & Networking**  
*WSU Everett, First Floor Lobby & Room #101, 915 North Broadway, Everett, WA 98201*
- 8:30AM **Welcome Remarks**  
*WSU Everett, Room #102 (Tiered Lecture Hall)*
- Paul Pitre, Chancellor, WSU Everett
  - Cassie Franklin, Mayor, City of Everett

- 8:40AM **WSU Highlights from the Past Year**
- Kirk Schulz, President, Washington State University
- 9:10AM **WSU Everett – Highlights from our Newest Campus**
- Paul Pitre, Chancellor, WSU Everett
- 9:40AM **Updates from WSU Tri-Cities, Spokane & Vancouver**
- Sandra Haynes, Chancellor, WSU Tri-Cities
  - Daryll DeWald, Chancellor, WSU Spokane
  - Mel Netzhammer, Chancellor, WSU Vancouver
- 10:30AM Break
- 10:45AM **PRESENTATIONS: New Programs – Data Analytics & Software Engineering**
- Data Analytics**
- Nella Ludlow, Director and Clinical Professor
- Software Engineering**
- Bolong Zeng, Program Coordinator and Clinical Associate Professor
- 11:15AM **TOUR: WSU Everett Building & “From Sea to Space”**
- Meet at the Grand Staircase on the first floor and split into tour groups*
- Mechanical Engineering Demos & Presentation**
- Xiaopeng Bi, Program Coordinator & Clinical Associate Professor
- Electrical Engineering Demos & Presentation**
- Jacob Murray, Program Coordinator and Clinical Associate Professor
- 12:30PM **Buffet Lunch & Presentation**
- WSU Everett, First Floor Lobby & Presentation in Room #101*
- Integrated Strategic Communication**
- Brett Atwood, Director and Clinical Associate Professor
- 1:30PM **PRESENTATION: WSU Office of Finance & Administration**
- WSU Everett, Room #102 (Tiered Lecture Hall)*
- Stacy Pearson, Vice President, Finance & Administration
- 2:15PM Break
- 2:30PM **EXECUTIVE SESSION: All WSU Advisory Councils**
- WSU Everett, Room #101*
- Topics**
- How can we work together on community outreach?
  - How can we strengthen our connection to Pullman?
  - Can we improve communications among the Councils?

4:00PM **Pre-Pairing Appetizers**

*WSU Everett, First Floor Lobby*

4:30PM **PRESENTATION: Wine Pairing with the Hospitality Business Management Program**

*WSU Everett, Room #102 (Tiered Lecture Hall)*

- Mark Beattie, Professor, Hospitality Business Management
- Hospitality Business Management students

5:30PM **Networking Chaser with Appetizers & Beverages**

*WSU Everett, First Floor Lobby*

## **COORDINATORS & DAY-OF CONTACTS**

### **WSU EVERETT**



**Ulla Johnson**

*Assistant to the Chancellor*

Cell: 206-291-7620

### **WSU EVERETT**



**Olivia Ericksen**

*Events Assistant*

Cell: 425-327-3759

### **WSU SPOKANE**

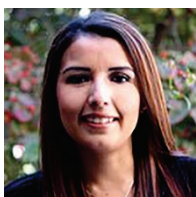


**Margaret Holt**

*Assistant to the Chancellor*

Cell: 509-998-1172

### **WSU TRI-CITIES**



**Karina Barajas**

*Assistant to the Chief of Staff*

Cell: 509-845-1304

### **WSU VANCOUVER**



**Renee Bartocci**

*Chief of Staff*

Cell: 360-601-1782

### **WSU GOVT RELATIONS & EXTERNAL AFFAIRS**



**Marcia Garrett**

*Director of Regional Relations*

Cell: 206-300-1930





# WASHINGTON STATE UNIVERSITY



Washington State University Everett Campus

## WSU Advisory Council Tour & Summit

Everett, June 5-6, 2018



WASHINGTON STATE  
UNIVERSITY

## 2018 ADVISORY COUNCIL TOUR & SUMMIT

*June 5-6, 2018*

### COORDINATORS & DAY-OF CONTACTS

#### WSU EVERETT



**Ulla Johnson**  
*Assistant to the Chancellor*  
Cell: 206-291-7620

#### WSU EVERETT



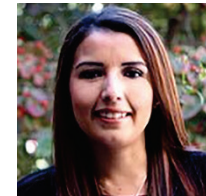
**Olivia Ericksen**  
*Events Assistant*  
Cell: 425-327-3759

#### WSU SPOKANE



**Margaret Holt**  
*Assistant to the Chancellor*  
Cell: 509-998-1172

#### WSU TRI-CITIES



**Karina Barajas**  
*Assistant to the Chief of Staff*  
Cell: 509-845-1304

#### WSU VANCOUVER



**Renee Bartocci**  
*Chief of Staff*  
Cell: 360-601-1782

#### WSU GOVT RELATIONS & EXTERNAL AFFAIRS



**Marcia Garrett**  
*Director of Regional Relations*  
Cell: 206-300-1930

# TABLE OF CONTENTS

Itinerary.....	2-3
Attendees.....	4-6
University Leadership.....	7
Presenters and Staff.....	8
Map.....	9
WSU Snapshot.....	10-11
Travel Contacts.....	12
Staff Contacts.....	13

## ITINERARY

### TUESDAY, JUNE 5

- 11:30AM **Box Lunch at WSU Everett**  
*WSU Everett, First Floor Lobby & Room #101, 915 North Broadway, Everett, WA 98201*
- 12:00PM Meet in South Entrance Lobby - groups will split and carpool to tours
- 1:00PM **CONCURRENT TOURS: WSU Mt. Vernon Research & Extension Center & Bread Lab**
- Group A: Research & Extension Center** | 16650 WA-536, Mt. Vernon, WA 98273
- Chad Kruger, Director, NW Washington Research & Extension Center
- Group B: Bread Lab** /11768 Westrar Ln, Burlington, WA 98233
- Kim Binczewski, Managing Director, Bread Lab
  - Steve Lyon, Senior Scientific Assistant
- 2:00PM First tour concludes, groups travel to alternate facility
- 2:30PM **CONCURRENT TOURS: WSU Mt. Vernon Research & Extension Center & Bread Lab**
- Group A: Bread Lab** /11768 Westrar Ln, Burlington, WA 98233
- Group B: Research & Extension Center** | 16650 WA-536, Mt. Vernon, WA 98273
- 3:30PM Carpool back to WSU Everett campus to pick-up vehicles or proceed to hotel for check-in
- 5:45PM Meet in Courtyard Marriott hotel lobby for carpool to reception and dinner
- 6:00PM **Reception & Dinner at Bluewater Organic Distillery: Bar & Bistro**  
*1205 Craftsman Way, Suite 109, Everett, WA 98201*
- 8:00PM **Overnight at Courtyard by Marriott in Everett**

### WEDNESDAY, JUNE 6

- 8:00AM **Continental Breakfast & Networking**  
*WSU Everett, First Floor Lobby & Room #101, 915 North Broadway, Everett, WA 98201*
- 8:30AM **Welcome Remarks**  
*WSU Everett, Room #102 (Tiered Lecture Hall)*
- Paul Pitre, Chancellor, WSU Everett
  - Cassie Franklin, Mayor, City of Everett
- 8:40AM **WSU Highlights from the Past Year**
- Kirk Schulz, President, Washington State University
- 9:10AM **WSU Everett – Highlights from our Newest Campus**
- Paul Pitre, Chancellor, WSU Everett
- 9:40AM **Updates from WSU Tri-Cities, Spokane & Vancouver**
- Sandra Haynes, Chancellor, WSU Tri-Cities
  - Daryll DeWald, Chancellor, WSU Spokane
  - Mel Netzhammer, Chancellor, WSU Vancouver



## ITINERARY

10:30AM Break

10:45AM **PRESENTATIONS: New Programs – Data Analytics & Software Engineering**

**Data Analytics**

- Nella Ludlow, Director and Clinical Professor

**Software Engineering**

- Bolong Zeng, Program Coordinator and Clinical Associate Professor

11:15AM **TOUR: WSU Everett Building & “From Sea to Space”**

*Meet at the Grand Staircase on the first floor and split into tour groups*

**Mechanical Engineering Demos & Presentation**

- Xiaopeng Bi, Program Coordinator & Clinical Associate Professor

**Electrical Engineering Demos & Presentation**

- Jacob Murray, Program Coordinator and Clinical Associate Professor

12:30PM **Buffet Lunch & Presentation**

*WSU Everett, First Floor Lobby & Presentation in Room #101*

**Integrated Strategic Communication**

- Brett Atwood, Director and Clinical Associate Professor

1:30PM **PRESENTATION: WSU Office of Finance & Administration**

*WSU Everett, Room #102 (Tiered Lecture Hall)*

- Stacy Pearson, Vice President, Finance & Administration

2:15PM Break

2:30PM **EXECUTIVE SESSION: All WSU Advisory Councils**

*WSU Everett, Room #101*

**Topics**

- How can we work together on community outreach?
- How can we strengthen our connection to Pullman?
- Can we improve communications among the Councils?

4:00PM **Pre-Pairing Appetizers**

*WSU Everett, First Floor Lobby*

4:30PM **PRESENTATION: Wine Pairing with the Hospitality Business Management Program**

*WSU Everett, Room #102 (Tiered Lecture Hall)*

- Mark Beattie, Professor, Hospitality Business Management
- Hospitality Business Management students

5:00PM **Networking Chaser with Appetizers & Beverages**

*WSU Everett, First Floor Lobby*



## ADVISORY COUNCIL MEMBERS



**Carl Adrian**  
WSU Tri-Cities  
*CEO, Tri-City  
Development Council*



**Scott Boyer**  
WSU Everett  
*Retired*  
Coastal Community Bank



**Max Ault**  
WSU Vancouver  
*Interim President, Columbia River  
Economic Development Council*



**Phil Brockman**  
WSU Everett  
*Superintendent*  
Sedro-Wooley School Dist.



**Maggie Bagwell**  
WSU Everett  
*Executive Director*  
Sno-Isle Technical Skills Center



**Aaron Dawson**  
WSU Vancouver  
*President, Director of Tax*  
Opsahl Dawson



**Gary Baker**  
WSU Everett  
*Attorney at Law*  
Baker Law Firm P.S.



**Crystal Donner**  
WSU Everett  
*President/CEO*  
Pertee Engineering



**Ken Baldwin**  
WSU Everett  
*Principal, Business  
Solutions Entrepreneur*



**Bob Drewel**  
WSU Everett  
*Professional Consultant*  
Washington State University



**Dana Riley Black**  
WSU Everett  
*Exec. Director for STEM, Partnerships,  
& Legislation, Everett Public Schools*



**Brian Evans**  
WSU Everett  
*Owner, Madrona  
Financial Services*



**Bob Bolerjack**  
WSU Everett  
*Executive Director of Govt. Affairs*  
City of Everett



**Fran Forgette**  
WSU Tri-Cities  
*Attorney, Rettig Forgette  
Iller Adamson*



**Mike Bomar**  
WSU Vancouver  
*Director of Economic Development*  
Port of Vancouver



**Cassie Franklin**  
WSU Everett  
*Mayor*  
City of Everett

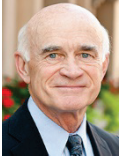
## ADVISORY COUNCIL MEMBERS



**Kelly Fukai**  
WSU Spokane  
*Regional Affairs, Schweitzer  
Engineering Laboratories, Inc.*



**Brooke Ledebor**  
WSU Spokane  
*Development Director  
WSU College of Nursing*



**Rich Hadley**  
WSU Spokane  
*President Emeritus  
Greater Spokane Incorporated*



**Julianna Marler**  
WSU Vancouver  
*CEO  
Port of Vancouver*



**Rustin Hall**  
WSU Spokane  
*President/CEO  
ALSC Architects*



**Wayne Martin**  
WSU Tri-Cities  
*Retired*



**Tom Hoban**  
WSU Everett  
*CEO & Co-Founder  
Coast Group of Companies*



**Pat McClain**  
WSU Everett  
*Advisory Council Chair  
McClain Insurance Services*



**Eric Holmes**  
WSU Vancouver  
*City Manager  
City of Vancouver*



**Kris McDuffy**  
WSU Everett  
*Superintendent  
Edmonds School District*



**Patrick Jensen**  
WSU Tri-Cities  
*Chief Executive Officer  
Cadwell*



**Jon Nehring**  
WSU Everett  
*Mayor  
City of Marysville*



**Helen Johnson Price**  
WSU Everett  
*County Commissioner  
Island County Washington*



**Patrick Pierce**  
WSU Everett  
*President & CEO, Economic  
Alliance Snohomish County*



**Nona Larsen**  
WSU Everett  
*Director of Prog. Management &  
Operations, PACCAR Tech Center*



**Tom Reese**  
WSU Spokane  
*Spokane Branch Manager  
URS Corporation*

## ADVISORY COUNCIL MEMBERS



**Brent Ridge**  
WSU Tri-Cities  
*Vice President of Corporate Services*  
Energy Northwest



**Barb Tolbert**  
WSU Everett  
*Mayor*  
City of Arlington



**Lisa Schauer**  
WSU Vancouver  
*Partner*  
PointNorth Consulting



**Brenda White**  
WSU Everett  
*Community Relations & External Affairs, Snohomish County PUD*



**Kevin W. Smith**  
WSU Tri-Cities  
*Retired*



**Don Wick**  
WSU Everett  
*Retired/Community Volunteer*



**Susan Stacy**  
WSU Spokane  
*Chief Nursing Officer, Providence Sacred Heart Medical Center*



**Mei Wu**  
WSU Vancouver  
*Managing Director*  
SmartRG Inc.



**John Sternlicht**  
WSU Everett  
*CEO, Economic Development Alliance of Skagit County*



**Sharon Wylie**  
WSU Vancouver  
*State Representative*  
49<sup>th</sup> Legislative District



**Jesica Stickle**  
WSU Everett  
*President/CEO, Greater Marysville Tulalip Chamber of Commerce*

## UNIVERSITY LEADERSHIP



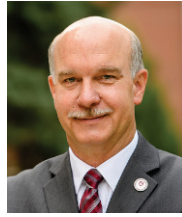
**Kirk H. Schulz**  
President  
*WSU*



**Mike Worthy**  
Regent  
*WSU*



**Paul E. Pitre**  
Chancellor  
*WSU Everett*



**Daryll DeWald**  
Chancellor  
*WSU Health Sciences Spokane*



**Sandra Haynes**  
Chancellor  
*WSU Tri-Cities*



**Mel Netzhammer**  
Chancellor  
*WSU Vancouver*



**Mary Jo Gonzales**  
Vice President  
*Student Affairs*



**Chris Keane**  
Vice President  
*Office of Research*



**Colleen Kerr**  
Vice President  
*Ext. Relations & Govt. Affairs*



**Stacy Pearson**  
Vice President  
*Finance & Administration*



**Sasi Pillay**  
Vice President  
*Information Tech. Services*



**Phil Weiler**  
Vice President  
*Marketing & Communications*

## WSU PRESENTERS & STAFF



**Brett Atwood**  
WSU Everett  
*Director and Clinical Assoc. Professor*  
Integrated Strategic Communication



**Olivia Ericksen**  
WSU Everett  
*Events Assistant*  
Office of the Chancellor



**Karina Barajas**  
WSU Tri-Cities  
*Assistant to the Chief of Staff*  
Office of the Chancellor



**Margaret Holt**  
WSU Spokane  
*Assistant to the Chancellor*  
Office of the Chancellor



**Renee Bartocci**  
WSU Vancouver  
*Campus Chief of Staff*  
Office of the Chancellor



**Ulla Johnson**  
WSU Everett  
*Assistant to the Chancellor*  
Office of the Chancellor



**Mark Beattie**  
WSU Everett  
*Assoc. Vice Chancellor, Academic Affairs*  
& Prof., Hosp. Business Management



**Chad Kruger**  
WSU Everett  
*Director, Center for Sustaining Agriculture*  
& Natural Resources and NWREC



**Xiaopeng Bi**  
WSU Everett  
*Clinical Assoc. Professor & Prog. Coord.*  
Mechanical & Materials Engineering



**Nella Ludlow**  
WSU Everett  
*Director and Clinical Professor*  
Data Analytics



**Kim Binczewski**  
WSU Bread Lab  
*Managing Director*



**Steve Lyon**  
WSU Bread Lab  
*Senior Scientific Assistant*



**Cheryl Blackburn**  
WSU Everett  
*Facilities Administrator*  
Office of the Chancellor



**Chris Mulick**  
WSU Government Relations  
*Director of State Relations*  
External Affairs & Govt. Relations



**Randy Bolerjack**  
WSU Everett  
*Director*  
Communications & Public Relations



**Jacob Murray**  
WSU Everett  
*Program Coordinator, Clinical Asst. Prof.*  
Electrical Engineering



**Alistair Boudreaux**  
WSU Everett  
*Director*  
IT Services



**Lynne Varner**  
WSU Everett  
*Associate Vice Chancellor*  
Marketing Strategy & Comm. Relations



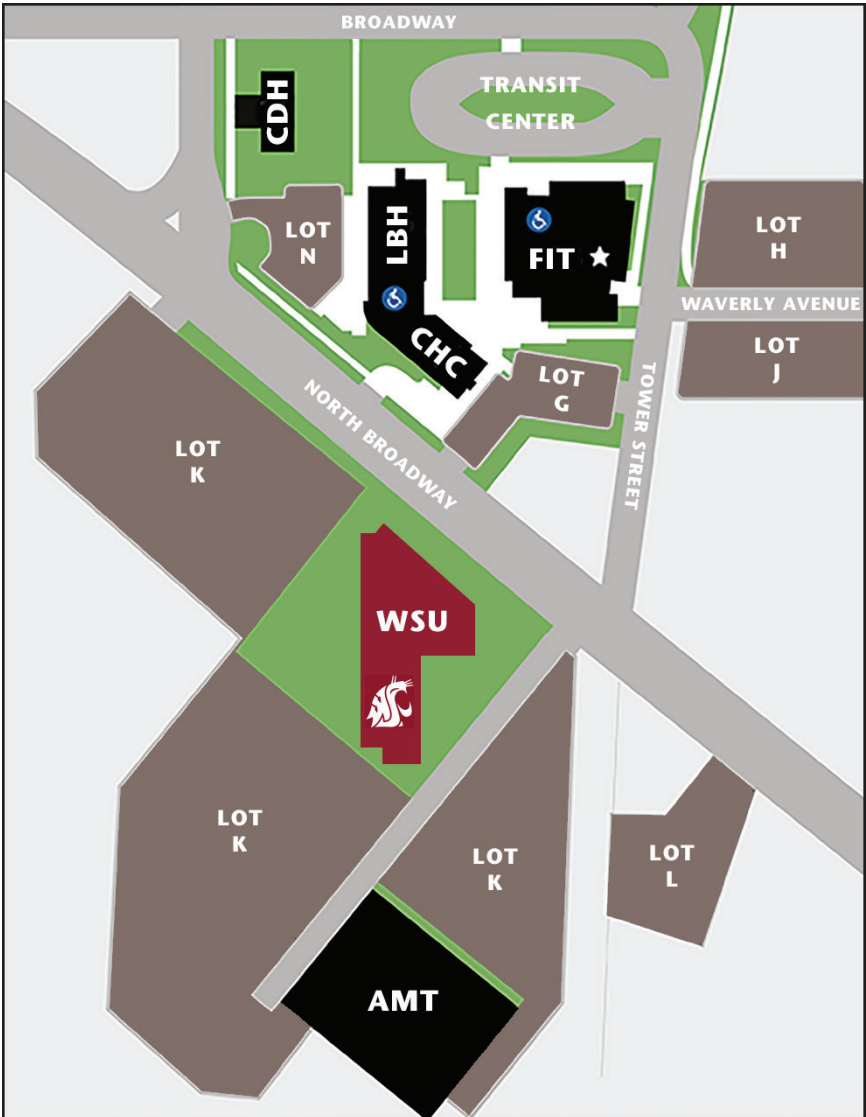
**Bobby Christenson**  
WSU Everett  
*Maintenance Mechanic*  
Facilities



**Bolong Zeng**  
WSU Everett  
*Program Coordinator, Clinical Asst. Prof.*  
Software Engineering



# MAPS



## KEY

- Permit Parking
- Visitor Parking
- ADA Restrooms

## Main Campus Buildings

- AMT** Advanced Manufacturing Training
- CDH** Cedar Hall
- CHC** Community Health Center
- FIT** Walt Price Student Fitness Center
- LBH** Liberty Hall
- WSU** WSU Everett



# 2017/2018 WSU SNAPSHOT

## WSU Tuition and Fees, annual (Pullman) Fall 2017

Resident undergrad: **\$11,391 w/ fees**

Nonresident undergrad: **\$25,817 w/ fees**

Cost of Attendance (Pullman, RUG): **\$26,996**

## Total Biennial Operating Budget Revenues

2017-2019: **\$2.1 billion** (\$477.7 million of this is state appropriation)

## Total Capital Budget 2017-19 Biennium:

**\$157.3 million**

## Budget Breakdown by Campus FY 2018

Pullman/Spokane: \$205.7 state/ \$202.6 tuition/ **\$408.3m total**

Tri-Cities: \$9.1 state/ \$11.2 tuition/ **\$20.3m total**

Vancouver: \$18.1 state/ \$24.4 tuition/ **\$42.5m total**

Total: \$232.9 state/ \$238.2 tuition/ **\$471.1m total**

## Total Research & Development Expenditures (2016)

**\$334.1 million** (National Science Foundation, 2016)

## Private Support (annual fundraising total) FY 2017

**\$122.6 million**

## WSU Endowment (2017)

**\$975.2 million**, including \$466.1 million WSU Foundation and \$509.1 million land grant funds

## Athletics Budget FY 2017

**\$64.3 million** generated by Athletics Operations, primarily from Pac-12 distributions (which include all broadcast revenues), ticket sales, contributions, sponsorship rights, NCAA distributions and student fees allocated by ASWSU. No general fund or tuition dollars support WSU athletics.

## Undergraduate Indebtedness at Graduation FY 2017

WSU undergrad average (for students with debt): **\$25,951**

National average FY 2015: **\$30,100** (Project on Student Debt)

WSU median for those with debt: **\$24,279**

**57%** WSU students graduated with loan debt

**68%** nationally graduated with debt (Project on Student Debt)

**27%** - pay no tuition

**33%** - pay full tuition

## Financial Aid and Scholarships to Undergraduates FY 2017

More than **\$289.3 million** to 19,152 students

## Undergrad Time to Degree FY 2017 (All Campus)

Full-time first-time new freshman students: **4.2 years**

Full-time first-time new transfer students w/ AA degree: **2.5 years**

## Four-year Graduation rate (FY 2017)

Undergrad rate: **37.0%** (*WSU is above the national average*)

## Freshman retention rate (2016-2017)

WSU: **80.8%** (*WSU is at the national average*)

## Low Income Students (2017)

Undergrads eligible for Pell Grant: **33.1%**

Freshman first year retention rate: **76.3%**

Four-year graduation rate: **26.0%**

Degrees produced: **1,917**

## Degrees Produced (FY 2017)

Bachelors' degrees: **5,597**

High demand bachelors' degrees: **1,966**

Advanced degrees: **1,491**

Doctoral degrees: **315** (PhD and EDD); **216** (Professional)

\*\*\*Data Compiled January, 2018

# 2017/2018 WSU SNAPSHOT

## WSU Head Count\* Enrollment (Fall 2017)

Total: 30,614 head count (27,908 FTE)

Undergrad: 25,277

Graduate/MBA: 4,198

Professional: 1,139

- 79.0% in-state (83.4% of undergrads are in-state)
- 13.8% out-of-state
- 7.2% international students

Pullman: 20,286 total

Spokane: 1,616 total

Vancouver: 3,546 total

Tri-Cities: 1,937 total

Undergrad: 17,646

Undergrad: 594

Undergrad: 3,091

Undergrad: 1,719

Grad/MBA: 2,183

Grad/MBA: 340

Grad: 455

Grad: 218

Professional: 457

Professional: 682

Everett: 222 total

WSU Online: 3,007 enrolled in a degree program

\*\*\*WSU offered this option in 1998

Undergrad: 222

Undergrad: 2,005

Grad: 1,002

5,092 unique students receiving some form of online education via WSU Online

23 degree programs offered (Undergrad: 12; Grad: 11)

## WSU State Funded FTE Enrollment (Fall 2017)

Total: 27,908 FTE

Pullman - 21,336

Spokane - 2,109

Everett - 180

Tri-Cities - 1,430

Vancouver 2,853

## Students of Color 29.1% (33.3% of total freshmen) (Fall 2017)

Pullman: 29.6%

Vancouver: 26.2%

Spokane: 23.3%

Everett: 34.2%

Tri-Cities: 38.9%

WSU Online: 25.6%

## First Generation Students (Fall 2017) (All Campuses)

Total: 9,658 students – 38.2% total undergraduate enrollment

Total: 1,721 students – 37.3% total freshman enrollment

## Transfer Students (Fall 2017)

Total: 2,683 - 72.2% of applicants offered admission

Total percentage of applicants enrolled: 54.2%

Pullman: 1,093

67.5% offered admission

Vancouver:

672

77.4% offered admission

Spokane: 89

85.1% offered admission

Everett:

83

66.0% offered admission

Tri-Cities: 268

79.5% offered admission

WSU Online:

478

76.4% offered admission

## Alumni (2017)

Total: 219,903

Washington: 128,976 - 58% of total alumni

Eastern Washington: 47,815 - 37% of total alumni in Washington

Western Washington: 81,161 - 63% of total alumni in Washington

\*\*\*Puget Sound: 57,052 - 44% of total alumni in Washington

## Employee FTE\* by Work Location (Fall 2017)

	<i>Faculty</i>	<i>AP**</i>	<i>Classified</i>	<i>Total</i>
<i>Pullman</i>	1,467.8	1,377.8	1,538.1	4,383.8
<i>Spokane</i>	259.1	142.1	182.8	583.9
<i>Tri-Cities</i>	127.9	118.5	71.3	317.7
<i>Vancouver</i>	212.5	83.6	110.3	406.5
<i>Everett</i>	23.0	11.8	5.0	39.8
<i>Other</i>	225.0	292.5	150.7	668.1
<b><i>Total</i></b>	<b>2,315.3</b>	<b>2,026.2</b>	<b>2,058.1</b>	<b>6,399.6</b>

\*Includes FTE for monthly appointments only

\*\*AP refers to administrative/professional employees

## Bargaining Unit Employees (2017)

Total Bargaining Unit Employees: 255

Total Bargaining Units: 7

\*\*\*Data Compiled January, 2018

## TOUR SITES & CONTACTS

### WSU CAMPUS

**Washington State  
University Everett**

915 North Broadway,  
Everett, WA 98201  
425-405-1600

### HOTEL

**Courtyard by Marriott  
Seattle Everett Downtown**

3003 Colby Avenue  
Everett, WA 98201  
425-259-2200

### TOUR SITE

**WSU Mt. Vernon Research  
& Extension Center**

16650 WA-536,  
Mt. Vernon, WA 98273  
360-848-6120

### RESTAURANT

**Bluewater Organic  
Distillery: Bar & Bistro**

1205 Craftsman Way, Suite 109  
Everett, WA 98201  
425-404-1408

### TOUR SITE

**WSU Mt. Vernon Bread Lab**

11768 Westar Lane,  
Burlington, WA 98233  
360-707-4640

### AIRPORT

**Seattle-Tacoma  
International Airport (SEA)**

17801 International Boulevard,  
Seattle, WA 98158  
206-787-5388

## SPONSORS

